



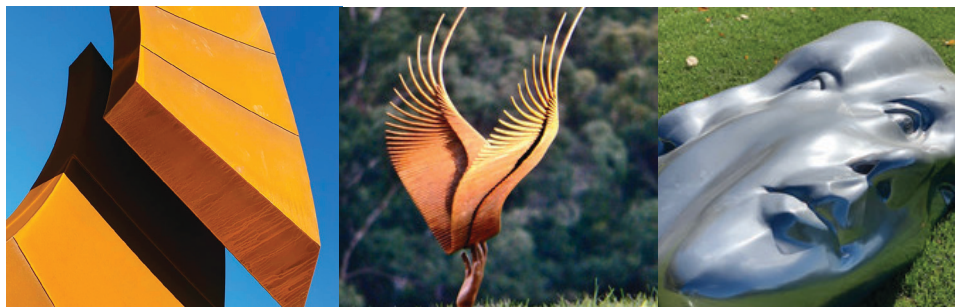
## 2023 CATALOGUE

Wilburra Estate, Barrengarry, Kangaroo Valley

9th - 10th & 16th - 17th September 2023

# photo competition

## SNAP A PHOTO TO WIN A \$500 CASH PRIZE



### Enter via Instagram

1. Follow us on instagram @artsinthevalley
2. Upload your photos to instagram and tag @artsinthevalley



### Enter via Facebook

1. Like facebook.com/artsinthevalley
2. Send us a message with your photo



### Enter via Online Form

1. Make sure your photos are below 5MB each
2. Fill in the form by scanning the qr code below

## SHARE YOUR PHOTOS WITH US TO WIN



Entries open September 9, 10am and close September 20, 5pm. Winners announced on Friday 22 September, 2023. Photographs submitted may be used for promotional purposes. Winners will be contacted via Messenger or by email.

For all terms and conditions visit [artsinthevalley.net.au/photocomp](https://artsinthevalley.net.au/photocomp)

Cover image: Michael Purdy 'Dancing Branches' photo: Joshua Shrubbs

# sculpture in the valley 2023

## Acknowledgement of Country

Arts in the Valley acknowledges and pays respect to the traditional owners of the land on which we meet. We pay respect to the Elders of this community who have continued to guide and share their cultural wisdom with our community.

## Welcome to Sculpture in the Valley 2023!



This year's Sculpture in the Valley is the first for 4 years. Our last two attempts suffered first from Covid, and then massive rainfall which washed out most roads into Kangaroo Valley, some of which are still being repaired. It is a great pleasure to put on a show once more and give our sculptors a chance to display their work.

Wilburra Estate is a great setting for this show. It offers delightful views of the Valley as well as a brilliantly planned garden. We are most grateful to Andrew McKindlay and Susan Teasey for allowing us the use of their property.

I would like to thank Stuart McCreery, Sculpture Director, and David Ball, Curator, for all their efforts, as well as those of all our wonderful volunteers. Volunteers are one of the outstanding features of the Kangaroo Valley community. As volunteers we generally commit for the team spirit and satisfaction of communal effort. Sculpture in the Valley has a particular appeal for people, as sculpture seems an art medium of our times. The viewer may engage with the work for themselves, every step changes one's viewpoint, and impression, all within the control not of the artist but of the viewer.

We would like to thank the sculptors for their patience and are sure their works will appeal to many potential buyers. Above all, however, we hope you enjoy interacting with the sculptures here, and that many of them amuse, intrigue or interest you. Please remember to cast your vote to allocate \$5,000 to our People's choice prizewinners!

Nick Minogue  
President





# sculpture prizes

## Outdoor Sculpture Prizes

First prize - \$20,000

Highly Commended - \$5,000

People's Choice - \$3,000

## Indoor Sculpture Prizes

First prize - \$7,000

Highly Commended - \$1,500

People's Choice - \$2,000

**Curator:** David Ball

**Judges:** Janet Laurence and Michael Snape

**Sculpture Director:** Stuart McCreery

## Venue

Wilburra Estate, Barrengarry

## Help us award \$5,000 to the People's Choice Winners!



People's Choice Award gives visitors the opportunity to vote for their favourite sculpture, with the Outdoor Sculptor winning \$3,000 and Indoor Sculptor \$2,000. To vote, scan the QR code or visit [artsinthevalley.net.au/vote](https://artsinthevalley.net.au/vote)

# exhibition team



## David Ball, Curator

As a past winner of Sculpture in the Valley and Sculpture by the Sea, David has joined us as the Curator for 2023. His sculpture works are derived from forms observed in nature. With more than three decades of experience as a sculptor and artisan, he works from his industrial workshop in the Southern Highlands of NSW and onsite throughout Australia.



## Janet Laurence, Judge

Janet's practice examines our conflicting relationship to the natural world. She creates immersive environments that navigate interconnections between organic elements and systems of nature. Within the recognized threat of climate change, she explores what it might mean to heal and the natural environment, fusing this with a sense of communal loss and search for connection with powerful life-forces. She is internationally recognised. Honors include Rockefeller, Churchill, the Australia Council, and Antarctic Fellowships



## Michael Snape, Judge

Michael's work is mostly in steel and is consistently variable, working with text, abstraction and figuration. Represented in major collections including the Art Gallery of NSW, Macquarie University and Western Sydney University. He has executed large scale sculptural commissions in Melbourne, Sydney and Canberra and has previously judged other sculpture prizes including The Harbour Sculpture Award, The Sawmillers Sculpture Prize and The University of Western Sydney Sculpture Prize



## Stuart McCreery, Director

Stuart is a blend of project direction, acting and cabinet making. From Sydney Olympics venues to early days WestConnex to renewable energy why and how. From Lighthouse (look it up) to Belvoir theatre. From clunky tables to Danish modern armchairs. The thread is bringing all together for his own pleasure and for the pleasure and utility of others. All the time, building and gardening on Berry Mountain. And now Director of Sculpture in the Valley 2023: a wonderful coterie of locals beaver away for the benefit of Sculpture.

# exhibition program

## Saturday 9th September

11:00am	<b>Official Opening: Special Guest Peter Garrett AM</b> Announcement of prizes.
12:00pm	<b>Scots College Jazz Combo</b>
1:00 pm	<b>Curator's Tour</b> Join Curator and Sculptor David Ball on a guided tour around the site. Meet at Harry's Rock.
2.30pm	<b>Artist Talks</b> Gudula Dornseifer in conversation with judge Janet Laurence and Curator David Ball with audience Q&A.

## Sunday 10th September

1:00pm	<b>JJ Spence Duo</b>
2.30pm	<b>Artist Talks</b> Gudula Dornseifer in conversation with artists Alex and Amanda Ritchie with audience Q&A.

## Saturday 16th September

11:00am	<b>Curator's Tour</b> Join Curator and Sculptor David Ball on a guided tour around the site. Meet at Harry's Rock
1:00pm	<b>Jeremy Sawkins Trio</b>
2.30pm	<b>Artist Talks</b> Gudula Dornseifer in conversation with sculptor Greer Taylor with audience Q&A.

## Sunday 17th September

11:00am	<b>Curator's Tour</b> Join Curator and Sculptor David Ball on a guided tour around the site. Meet at Harry's Rock.
12.00pm	<b>Artist Talks</b> Gudula Dornseifer in conversation with sculptor Michael Purdy with audience Q&A.

\*Please note schedule subject to change.

# sculpture sales

All sculptures are for sale. Check on site labelling for sculptures that can be sold as separable parts. The sales desk is in the Indoor Sculpture marquee. After the exhibition closes please direct all sales enquiries to [sculpture@artsinthevalley.net.au](mailto:sculpture@artsinthevalley.net.au). Collection of sculptures is up to the new owner but if you need assistance please ask. All sculptures are to be collected by 4pm Tuesday 19th September. All prices are GST inclusive.

## outdoor sculptures



### 1. PAUL BACON

#### Swell

**Dimensions:** 250 cm x 50 cm x 175 cm  
**Materials:** Steel, rust proofing, oil, clear finish  
**Weight:** 80 kg  
**Price:** \$9,500



### 2. DAVID BALL

#### Passage

**Dimensions:** 300 cm x 600 cm x 650 cm  
**Materials:** Corten steel  
**Weight:** 2000kg  
**Price:** POA Excluded from judging



### 3. BRONWYN BERMAN

#### Whispered Secrets to the Wind

**Dimensions:** 200 cm x 150 cm x 300 cm  
**Materials:** Copper  
**Weight:** 60 kg  
**Price:** \$19,500





#### 4. NOAH BIRCH

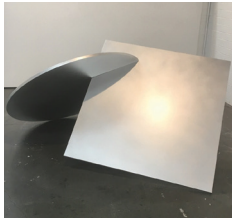
**interloper**

**Dimensions:** 54 cm x 102 cm x 106 cm

**Materials:** Aluminium alloy 5083

**Weight:** 50 kg

**Price:** \$8,000



#### 5. NOAH BIRCH

**not squared**

**Dimensions:** 82 cm x 117 cm x 110 cm

**Materials:** Aluminium alloy 5083

**Weight:** 20 kg

**Price:** \$14,000



#### 6. MIRIAM BOS

**Uncontained**

**Dimensions:** 100 cm x 2500 cm x 40 cm

**Materials:** Burnt fence posts, tie wire writing

**Weight:** 300 kg

**Price:** \$13,500



#### 7. JAMES BUNTER

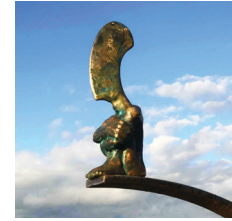
**Fractal Möbius**

**Dimensions:** 100 cm x 50 cm x 50 cm

**Materials:** Sandstone

**Weight:** 200 kg

**Price:** \$5,000



#### 8. ROSS CAMERON

**The Lone View of Axle Sharman**

**Dimensions:** 400 cm x 300 cm x 300 cm

**Materials:** Steel, polymer cement

**Weight:** 300 kg

**Price:** \$14,000



#### 9. KATHERINE CASTILLO ALFEREZ

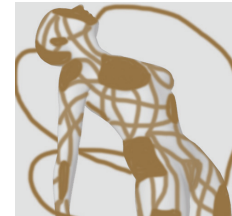
**Coral Queendom**

**Dimensions:** 160 cm x 48 cm x 30 cm

**Materials:** Bronze on eucalyptus plinth

**Weight:** 45 kg

**Price:** \$23,000



#### 10. RHONDA CASTLE

**Exuberance**

**Dimensions:** 170 cm x 80 cm x 80 cm

**Materials:** Bronze and metal rod

**Weight:** 70 kg

**Price:** \$11,800



#### 11. GARY CHRISTIAN

**Threshold 4 Red**

**Dimensions:** 350 cm x 140 cm x 60 cm

**Materials:** Steel, gal and painted

**Weight:** 60 kg

**Price:** \$24,000



## 12. GARY CHRISTIAN

### Threshold 5

**Dimensions:** 350 cm x 300 cm x 80 cm

**Materials:** Steel gal and chrome

**Weight:** 90 kg

**Price:** \$33,000



## 13. PATRICE COOKE

### Sun Seekers

**Dimensions:** 65 cm x 47 cm x 24 cm

**Materials:** Ceramic, metallic painted finish

**Weight:** 8 kg

**Price:** \$2,600



## 14. BETH CRAWFORD

### Dragon Egg In Nest

**Dimensions:** 58 cm x 58 cm x 58 cm

**Materials:** Ceramic, wood, palm leaves

**Weight:** 7 kg

**Price:** \$1,200



## 15. WIL EDWARDS-FRANCHIMON

### Twisted Forest

**Dimensions:** 192 cm x 188 cm x 145 cm

**Materials:** Corten steel

**Weight:** 87.5 kg

**Price:** \$15,500



## 16. JOHN FITZMAURICE

### Splash

**Dimensions:** 250 cm x 220 cm x 100 cm

**Materials:** 316 stainless steel, mirror finish

**Weight:** 110 kg

**Price:** \$48,000



## 17. JAMES HANCOCK

### Tree Machine

**Dimensions:** 200 cm x 75 cm x 30 cm

**Materials:** Laser cut steel

**Weight:** 80 kg

**Price:** \$3,000



## 18. STEPHEN HARRISON

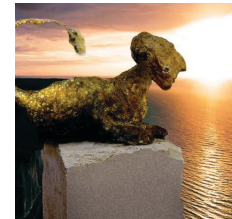
### Esto Extincta Brevis Candela

**Dimensions:** 120 cm x 90 cm x 200 cm

**Materials:** Bronze, concrete

**Weight:** 20 kg

**Price:** \$6,500



## 19. STEPHEN HARRISON

### The Golden Sphinx

**Dimensions:** 35 cm x 32 cm x 40 cm

**Materials:** Bronze (unique), steel

**Weight:** 16 kg

**Price:** \$13,000



## 20. TRACY HOPKIRK

### Life and Death and Everything In Between

**Dimensions:** 150 cm x 80 cm x 80 cm

**Materials:** Rib bones, mild steel, glass, found objects

**Weight:** 15 kg

**Price:** \$10,000



## 21. TRACY HOPKIRK

### Peregrine Falcon

**Dimensions:** 250 cm x 100 cm x 50 cm

**Materials:** Corten steel, bronze, glass eyes

**Weight:** 25 kg

**Price:** \$9,000



## 22. SCOTT INGRAM

### Silent Spring

**Dimensions:** 155 cm x 25 cm x 20 cm

**Materials:** Sandstone, Australian marble, recycled steel

**Weight:** 50 kg

**Price:** \$6,500



## 23. GREG JOHNS

### The Observer

**Dimensions:** 190 cm x 40 cm x 19 cm

**Materials:** Solid mild steel

**Weight:** 70 kg

**Price:** \$11,000



## 24. GREG JOHNS

### Sentinel

**Dimensions:** 294 cm x 60 cm x 80 cm

**Materials:** Corten steel, burnt jarrah

**Weight:** 250 kg

**Price:** \$75,000



## 25. AKIRA KAMADA

### Birth

**Dimensions:** 150 cm x 450 cm x 150 cm

**Materials:** Bamboo, vine, recycled copper wire

**Weight:** 60 kg

**Price:** \$10,000



## 26. DAVID KEATING

### Escape Pod

**Dimensions:** 304 cm x 152 cm x 220 cm

**Materials:** Wood and steel

**Weight:** 350 kg

**Price:** \$6,800



## 27. JULIE LOVE

### Point Of View

**Dimensions:** 160 cm x 40 cm x 40 cm

**Materials:** Copper, rivetted copper, granite

**Weight:** 50 kg

**Price:** \$15,500





### 28. CAMIE LYONS

#### Bush Custodians

**Dimensions:** 270 cm x 580 cm x 143 cm

**Materials:** Bronze

**Weight:** 130 kg

**Price:** \$70,000



### 29. LUCINDA MCDONALD

#### THE BREAKTHROUGH

**Dimensions:** 140 cm x 160 cm x 100 cm

**Materials:** Welded steel, enamel paint

**Weight:** 60 kg

**Price:** \$4,900



### 30. LUCINDA MCDONALD

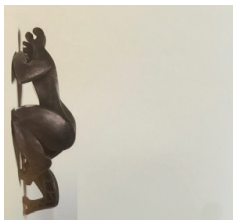
#### Circle Circus

**Dimensions:** 90 cm x 180 cm x 180 cm

**Materials:** Welded steel, enamel paint

**Weight:** 60 kg

**Price:** \$4,900



### 31. INGRID MORLEY

#### Snakes and Ladders

**Dimensions:** 140 cm x 47 cm x 45 cm

**Materials:** Copper

**Weight:** 18 kg

**Price:** \$26,000



### 32. INGRID MORLEY

#### Chariot Of Confessions

**Dimensions:** 263 cm x 146 cm x 150 cm

**Materials:** Feed lot troughs, scribbly gum, pub carpet, wood, steel

**Weight:** 110 kg

**Price:** \$35,000



### 33. ULAN & RACHEL MURRAY & BURNS

#### Wake

**Dimensions:** 130 cm x 110 cm x 110 cm

**Materials:** Bronze

**Weight:** 50 kg

**Price:** \$35,000



### 34. FIONA NELSON

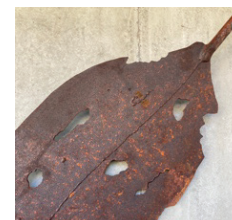
#### Spotted Gum Leaf No 1

**Dimensions:** 255 cm x 50 cm x 12 cm

**Materials:** Lyten weathering steel

**Weight:** 15 kg

**Price:** \$1,600



### 35. FIONA NELSON

#### Spotted Gum Leaf No 2

**Dimensions:** 150 cm x 30 cm x 8 cm

**Materials:** Lyten weathering steel

**Weight:** 10 kg

**Price:** \$990



---

**36. FIONA NELSON**

**Spotted Gum Leaf No 3**

**Dimensions:** 220 cm x 40 cm x 10 cm

**Materials:** Lyten weathering steel

**Weight:** 12 kg

**Price:** \$1,400



---

**37. DENNIS NICKELL**

**Coming Together From All Walks of Life**

**Dimensions:** 120 cm x 1200 cm x 1200 cm

**Materials:** Wood

**Weight:** 60 kg

**Price:** \$3,900



---

**38. NICOLE O'REGAN**

**Strive**

**Dimensions:** 195 cm x 125 cm x 75 cm

**Materials:** Rhyolite, granite, sandstone, steel

**Weight:** 120 kg

**Price:** \$11,000



---

**39. SONIA PAYES**

**Re-emergence 2.5m**

**Dimensions:** 250 cm x 125 cm x 50 cm

**Materials:** Bronze with black patina

**Weight:** 160 kg

**Price:** \$125,000



---

**40. SONIA PAYES**

**Re-emergence 2m**

**Dimensions:** 200 cm x 125 cm x 50 cm

**Materials:** Bronze with black patina

**Weight:** 150 kg

**Price:** \$145,000



---

**41. BELINDA PIGGOTT**

**Tenacity**

**Dimensions:** 135 cm x 57 cm x 40 cm

**Materials:** Stoneware, sandstone, steel

**Weight:** 25 kg

**Price:** \$2,800



---

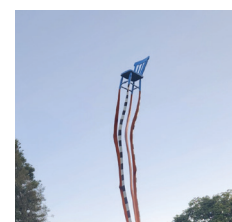
**42. MICHAEL PURDY**

**FLAMMABLE LANDSCAPE**

**Dimensions:** 450 cm x 135 cm x 15 cm

**Materials:** Local eucalypt, hardwood and stained oregon

**Price:** \$13,200



---

**43. MICHAEL PURDY**

**A DELICATE BALANCE & SEAT OF LEARNING**

**Dimensions:** 550 cm x 100 cm x 100 cm

**Materials:** White cedar, casuarina, oils, mild steel base, red cedar, chair, driftwood, eucalypt, oils, acrylic paint and mild steel base

**Price:** \$POA



#### 44. DEBORAH REDWOOD

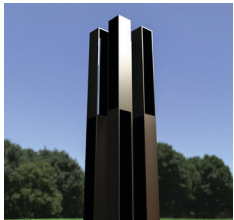
##### Attraction/repulsion

**Dimensions:** 177 cm x 130 cm x 120 cm

**Materials:** Steel

**Weight:** 10 kg

**Price:** \$8,000



#### 45. ALEX RITCHIE

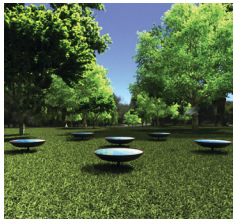
##### Geo/metric

**Dimensions:** 400 cm x 100 cm x 100 cm

**Materials:** Steel and black paint

**Weight:** 750 kg

**Price:** \$14,000



#### 46. AMANDA RITCHIE

##### Occulus

**Dimensions:** 20 cm x 700 cm x 700 cm

**Materials:** Steel

**Weight:** 1500 kg

**Price:** \$7,500



#### 47. JIMMY RIX

##### Kangaroo and Honeyeater (ed 1/3)

**Dimensions:** 256 cm x 169 cm x 43 cm

**Materials:** Corten steel

**Weight:** 130 kg

**Price:** \$37,500



#### 48. ROBYN RUMPF

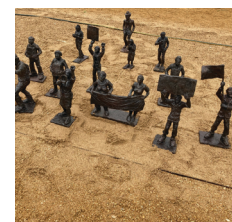
##### Iceberg Growler

**Dimensions:** 100 cm x 80 cm x 60 cm

**Materials:** White marble

**Weight:** 80 kg

**Price:** \$15,000



#### 49. IAN SCOTT

##### A Small Demonstration

**Dimensions:** 60 cm x 200 cm x 100 cm

**Materials:** Bronze

**Weight:** 130 kg

**Price:** \$22,000



#### 50. NIKKI SHARP

##### Cavallo Head

**Dimensions:** 170 cm x 27 cm x 35 cm

**Materials:** Resin

**Weight:** 95 kg

**Price:** \$6,900



#### 51. GREG STANFORD

##### Sun Box

**Dimensions:** 86 cm x 64 cm x 12 cm

**Materials:** Opal acrylic, stainless steel

**Weight:** 20 kg

**Price:** \$3,000





## 52. BRITTA STENMANNS

### Vulnerable Beings

**Dimensions:** 240 cm x 15 cm x 15 cm

**Materials:** Salvaged Fobitu, hand carved and oiled, white ant and rot safe, attached to stirrup to be concreted in

**Weight:** 12 kg

**Price:** \$4,800



## 53. BRITTA STENMANNS

### Balanced

**Dimensions:** 105 cm x 101 cm x 80 cm

**Materials:** Salvaged and welded, self standing, weathered and sealed steel, gold leaf

**Weight:** 21 kg

**Price:** \$5,400



## 54. BRITTA STENMANNS

### Beyond the Now

**Dimensions:** 220 cm x 191 cm x 70 cm

**Materials:** Salvaged and welded, self standing, weathered and sealed steel

**Weight:** 45 kg

**Price:** \$7,200



## 55. GREER TAYLOR

### collecting tears

**Dimensions:** 180 cm x 500 cm x 500 cm

**Materials:** Powdercoating on aluminium, silicon thread, stainless steel fittings, around tree

**Weight:** 40 kg

**Price:** \$POA



## 56. RALPH TIKERPAE

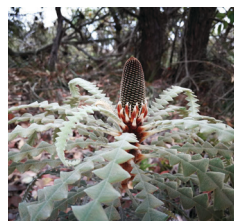
### The Gift

**Dimensions:** 123 cm x 164 cm x 60 cm

**Materials:** Recycled metal

**Weight:** 50 kg

**Price:** \$3,200



## 57. MEGAN WAUD

### Banksia

**Dimensions:** 200 cm x 250 cm x 250 cm

**Materials:** Steel

**Weight:** 100 kg

**Price:** \$28,500



## 58. EDWARD WILLSON

### Autumn Fade

**Dimensions:** 170 cm x 110 cm x 50 cm

**Materials:** Granite on Corten steel

**Weight:** 700 kg

**Price:** \$12,000



## 59. EDWARD WILLSON

### Convergence

**Dimensions:** 170 cm x 350 cm x 120 cm

**Materials:** Granite on Corten steel

**Weight:** 350 kg

**Price:** \$10,000

# indoor sculptures



## 60. PAT ANDERSON

### Curling Form I

**Dimensions:** 14 cm x 19 cm x 21 cm

**Materials:** Porcelain

**Weight:** 15 kg

**Price:** \$750



## 61. PAT ANDERSON

### Twisted Form IV

**Dimensions:** 15 cm x 22 cm x 24 cm

**Materials:** Porcelain

**Weight:** 15 kg

**Price:** \$850



## 62. MAURO BADII

### Identity

**Dimensions:** 126 cm x 30 cm x 32 cm

**Materials:** Mild steel

**Weight:** 10 kg

**Price:** \$2,700



## 63. MAURO BADII

### Impermanence

**Dimensions:** 120 cm x 105 cm x 30 cm

**Materials:** Mild steel

**Weight:** 20 kg

**Price:** \$5,600



## 64. BRONWYN BERMAN

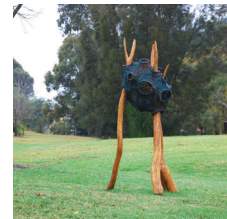
### Wisp III

**Dimensions:** 50 cm x 40 cm x 80 cm

**Materials:** Copper

**Weight:** 2 kg

**Price:** \$2,750



## 65. BRONWYN BERMAN

### Hive

**Dimensions:** 185 cm x 80 cm x 70 cm

**Materials:** Copper, timber

**Weight:** 80 kg

**Price:** \$25,000



## 66. ROGER BOURNE

### Untitled

**Dimensions:** 20 cm x 80 cm x 20 cm

**Materials:** Woven raffia

**Weight:** 0.5 kg

**Price:** \$1,500



#### 67. JONI BRAHAM

##### Rolling Over Patriarchy and Loving It

**Dimensions:** 62 cm x 25 cm x 30 cm

**Materials:** Free standing, found objects, papier-maché, wire, wood

**Weight:** 1.5 kg

**Price:** \$400



#### 68. JONI BRAHAM

##### Seeking Solace in Unrequited Love

**Dimensions:** 80 cm x 40 cm x 12 cm

**Materials:** Wall work, found objects, papier-maché, wire, wood

**Weight:** 0.5 kg

**Price:** \$400



#### 69. JAMES BUNTER

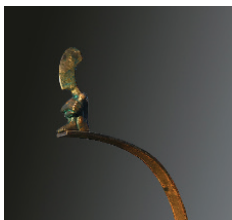
##### Round and Round #2

**Dimensions:** 65 cm x 34 cm x 34 cm

**Materials:** Sandstone

**Weight:** 50 kg

**Price:** \$2,600



#### 70. ROSS CAMERON

##### The Lone View of Axle Sharman

**Dimensions:** 44 cm x 8 cm x 37 cm

**Materials:** Bronze and mild steel

**Weight:** 3 kg

**Price:** \$3,600



#### 71. ROSS CAMERON

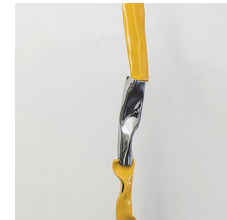
##### Father and Child

**Dimensions:** 19 cm x 7 cm x 5 cm

**Materials:** Bronze

**Weight:** 2 kg

**Price:** \$2,300



#### 72. GARY CHRISTIAN

##### Warning

**Dimensions:** 187 cm x 35 cm x 35 cm

**Materials:** Steel, painted and chromed

**Weight:** 40 kg

**Price:** \$7,000



#### 73. GLEN CLARKE

##### Acquiescent Arabesque

**Dimensions:** 46 cm x 48 cm x 32 cm

**Materials:** Timber toy puzzle, monochromatic acrylic, gold leaf

**Weight:** 2.6 kg

**Price:** \$7,565



#### 74. GLEN CLARKE

##### Australian Warhead

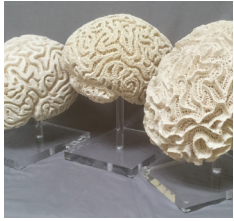
**Dimensions:** 225 cm x 120 cm x 77 cm

**Materials:** Origami folded shirts from Australian and international currencies, cotton, linen, wood. Perspex showcase

**Weight:** 100 kg

**Price:** \$75,650





## 75. PATRICE COOKE

### Three Wise Men (Brain Coral)

**Dimensions:** 20 cm x 30 cm x 22 cm

**Materials:** Ceramic

**Weight:** 6 kg

**Price:** \$1,200



## 76. PATRICE COOKE

### Strangler Fig Stand

**Dimensions:** 57 cm x 24 cm x 22 cm

**Materials:** Ceramic

**Weight:** 6 kg

**Price:** \$1,800



## 77. CLAIRE CROOK

### A Sign From Rosalie

**Dimensions:** 42 cm x 74 cm x 45 cm

**Materials:** Acrylic on board, with aluminium frame

**Weight:** 1 kg

**Price:** \$700



## 78. BRIAN CROSSMAN

### Dreamweaver

**Dimensions:** 41 cm x 67 cm x 12 cm

**Materials:** Wood and stainless steel

**Weight:** 6 kg

**Price:** \$1,100



## 79. WIL EDWARDS-FRANCHIMON

### Overseers

**Dimensions:** 54 cm x 40 cm x 22 cm

**Materials:** Corten steel

**Weight:** 0.6 kg

**Price:** \$550



## 80. WIL EDWARDS-FRANCHIMON

### Twisted Forest (maquette)

**Dimensions:** 42 cm x 43 cm x 23 cm

**Materials:** Corten steel, brass

**Weight:** 3.7 kg

**Price:** \$850



## 81. ROWAN FOTHERINGHAM

### Ephemeral

**Dimensions:** 90 cm x 25 cm x 25 cm

**Materials:** Bark, wire and wood

**Weight:** 3 kg

**Price:** \$POA



## 82. ROBYN GILBEY

### Steer-age

**Dimensions:** 56 cm x 41 cm x 21 cm

**Materials:** Genuine cow skull, copper leaf, asphaltum treated, with a verdigris motif under a rusted, aged metal plate, varnished

**Weight:** 46 kg

**Price:** \$1,600



---

**83. ROBYN GILBEY****Silverside****Dimensions:** 51 cm x 46 cm x 20 cm**Materials:** Genuine cow skull, silver leaf, two acid treatments and varnished**Weight:** 8 kg**Price:** \$1,400

---

**84. STEPHEN HARRISON****The Blind Sphinx****Dimensions:** 35 cm x 80 cm x 20 cm**Materials:** Clay, paint, found objects**Weight:** 7 kg**Price:** \$2,500

---

**85. SHARIN JESSOP****The Striped Marsh Frog Prince****Dimensions:** 16 cm x 21 cm x 21 cm**Materials:** Acrylic resin and copper**Weight:** 2.3 kg**Price:** \$980

---

**86. GREG JOHNS****Dry Country Mandala****Dimensions:** 48 cm x 46 cm x 24 cm**Materials:** Solid mild steel**Weight:** 10 kg**Price:** \$8,500

---

**87. AKIRA KAMADA****Flying To Nothing - No.20****Dimensions:** 30 cm x 20 cm x 20 cm**Materials:** Recycled paper, masking tape, BondCrete**Weight:** 0.1 kg**Price:** \$200

---

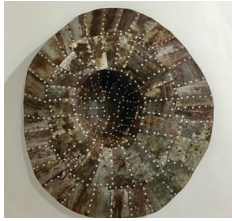
**88. ALAN KUCZYNSKI****The Great Escape****Dimensions:** 28 cm x 24 cm x 17 cm**Materials:** Bronze**Weight:** 15 kg**Price:** \$4,900

---

**89. GAVIN KYLE****Self Portrait****Dimensions:** 160 cm x 70 cm x 50 cm**Materials:** Silicone, hair, cloth, fibreglass, steel**Weight:** 15 kg**Price:** \$20,000

---

**90. JULIE LOVE****Intus II****Dimensions:** 70 cm x 70 cm x 50 cm**Materials:** Rivetted recycled metal**Weight:** 5 kg**Price:** \$7,500



### 91. JULIE LOVE

#### Caverna

**Dimensions:** 72 cm x 62 cm x 14 cm

**Materials:** Rivetted recycled metal

**Weight:** 5 kg

**Price:** \$7,500



### 92. CAMIE LYONS

#### Wings

**Dimensions:** 112 cm x 72 cm x 60 cm

**Materials:** Bronze

**Weight:** 15 kg

**Price:** \$9,500



### 93. SUSAN MCALISTER

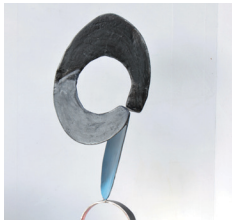
#### Blissed Out

**Dimensions:** 35 cm x 25 cm x 30 cm

**Materials:** Cold finished clay

**Weight:** 7 kg

**Price:** \$800



### 94. LUCINDA MCDONALD

#### Blurry Bongo

**Dimensions:** 60 cm x 30 cm x 15 cm

**Materials:** Welded steel

**Weight:** 3 kg

**Price:** \$950



### 95. EDUARDO MILAN

#### Moment

**Dimensions:** 71 cm x 30 cm x 23 cm

**Materials:** Mixed media

**Weight:** 10 kg

**Price:** \$4,800



### 96. INGRID MORLEY

#### Tall Tale ( 4 X Pieces In A Series)

**Dimensions:** 46 cm x 45 cm x 19 cm

**Materials:** Ceramic

**Weight:** 9 kg

**Price:** \$7,500



### 97. ULAN & RACHEL MURRAY & BURNS

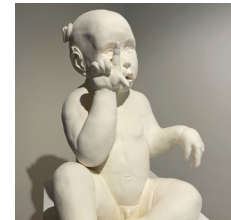
#### Umbra

**Dimensions:** 170 cm x 60 cm x 60 cm

**Materials:** Copper, Corten steel, stainless steel

**Weight:** 20 kg

**Price:** \$25,000



### 98. CLARE NICHOLSON

#### The Twitcher's Son

**Dimensions:** 151 cm x 39 cm x 60 cm

**Materials:** Earthenware, custom plinth, LED

**Weight:** 25 kg

**Price:** \$7,980





### 99. NICOLE O'REGAN

#### Venture

**Dimensions:** 73 cm x 107 cm x 30 cm

**Materials:** Slate, steel

**Weight:** 40 kg

**Price:** \$7,800



### 100. SONIA PAYES

#### Emergence 1

**Dimensions:** 53 cm x 25 cm x 16 cm

**Materials:** Bronze, black patina, burnt wooden base

**Weight:** 15 kg

**Price:** \$14,500



### 101. ROSIE PERL

#### The Book of Sorrows; Venus and the Ghost Who Walks

**Dimensions:** 25 cm x 81 cm x 5 cm

**Materials:** Multi media including MDF, cast resin, freshwater pearls, imitation gold leaf

**Weight:** 0.4 kg

**Price:** \$3,500



### 102. BELINDA PIGGOTT

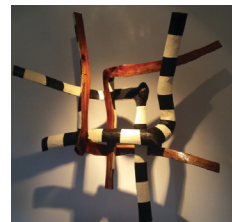
#### Riches Within

**Dimensions:** 48 cm x 28 cm x 28 cm

**Materials:** Manganese rich stoneware clay, copper based glaze, gold

**Weight:** 1.5 kg

**Price:** \$950



### 103. MICHAEL PURDY

#### A CEDAR BRANCH IS CUT AND REARRANGED

**Dimensions:** 110 cm x 90 cm x 40 cm

**Materials:** Red cedar, acrylic paint, travertine marble base

**Price:** \$2,750



### 104. MICHAEL PURDY

#### PLAYING WITH MATCHES

**Dimensions:** 105 cm x 55 cm x 40 cm

**Materials:** White cedar, wood stain

**Price:** \$2,250



### 105. ALEX RITCHIE

#### Geo/metric

**Dimensions:** 40 cm x 10 cm x 10 cm

**Materials:** Steel

**Weight:** 8 kg

**Price:** \$2,500



### 106. JIMMY RIX

#### Kelpie (ed 4/9)

**Dimensions:** 51 cm x 42 cm x 21.5 cm

**Materials:** Bronze

**Weight:** 13 kg

**Price:** \$8,500



### 107. JIMMY RIX

**Home is where the heart is (ed 3/5)**

**Dimensions:** 42 cm x 27 cm x 22 cm

**Materials:** Corten steel

**Weight:** 5 kg

**Price:** \$6,000



### 108. MARGARITA SAMPSON

**Offshoot**

**Dimensions:** 175 cm x 160 cm x 100 cm

**Materials:** Mild steel, old roofing iron, Corten steel

**Weight:** 100 kg

**Price:** \$25,000



### 109. MARGARITA SAMPSON

**Offshoot II**

**Dimensions:** 66 cm x 40 cm x 30 cm

**Materials:** Fencing wire, mild steel, recycled roofing iron

**Weight:** 7 kg

**Price:** \$1,700



### 110. IAN SCOTT

**Man and Car**

**Dimensions:** 10 cm x 15 cm x 12 cm

**Materials:** Bronze

**Weight:** 1 kg

**Price:** \$1,000



### 111. IAN SCOTT

**Head III**

**Dimensions:** 14 cm x 15 cm x 10 cm

**Materials:** Bronze

**Weight:** 1.5 kg

**Price:** \$1,000



### 112. GREER TAYLOR

**around about**

**Dimensions:** 36 cm x 50 cm x 50 cm

**Materials:** Found sticks, wire, stainless steel, wood, felt, cotton, text, acrylic

**Weight:** 3 kg

**Price:** \$3,500



### 113. RALPH TIKERPAE

**Regal Mermaid**

**Dimensions:** 28 cm x 111 cm x 6 cm

**Materials:** Carved and painted wood

**Weight:** 4 kg

**Price:** \$840



### 114. JOSEPHINE TOWNSEND

**Dappled Splendour**

**Dimensions:** 50 cm x 29 cm x 22 cm

**Materials:** Coloured porcelain, glazed inside, polished outside

**Weight:** 1.4 kg

**Price:** \$1,950



---

**115. JOSEPHINE TOWNSEND**

**How Many Trees Make A Forest?**

**Dimensions:** 90 cm x 100 cm x 70 cm

**Materials:** Ceramics

**Weight:** 23 kg

**Price:** \$2,200



---

**116. JEN VALENDER**

**Something Is Sinking In**

**Dimensions:** 17 cm x 12 cm x 12 cm

**Materials:** Bronze, wax, aluminium, pigment

**Weight:** 2 kg

**Price:** \$5,000



---

**117. WILLIAM VERSACE**

**Malocchio**

**Dimensions:** 62 cm x 25 cm x 16 cm

**Materials:** Found relic, cast bronze

**Weight:** 6 kg

**Price:** \$6,750



---

**118. WILLIAM VERSACE**

**Relic**

**Dimensions:** 50 cm x 22 cm x 17 cm

**Materials:** Found relic, cast bronze

**Weight:** 20 kg

**Price:** \$6,750



---

**119. WILLIAM VERSACE**

**Harp**

**Dimensions:** 55 cm x 38 cm x 15 cm

**Materials:** Found relic, cast bronze

**Weight:** 6 kg

**Price:** \$6,750



## our supporters

Special thanks to Susan Teasey and Andrew McKindlay for the use of Wilburra Estate. Thanks also to John Smart for the use of his paddock for car parking.

Thanks to Dave Selby for earthworks to help make the car park safe. Thanks to Kangaroo Valley Golf Club for the loan of a golf buggy, and to the Kangaroo Valley Agriculture & Horticulture Society (KV Show) for the loan of equipment

### Financial Supporters

Create NSW	Greg and Wendy See
Nick and Caroline Minogue	Helen Lunn
Glenn and John Ballard	Allan Gilden
Robert and Wendy Calkhoven	Gary Moore and Kerri Carlton
Alice Oppen OAM	Tony Barnett
Kathryn Lovric and Roger Allan	David Sanders and Cathryn Ferguson

### Kangaroo Valley Arts Festival Committee

Nick Minogue	President
Gudula Dornseifer	Vice President
Chris Green	Treasurer
Caroline Minogue	Secretary
Stuart McCreery	Sculpture Director
Gary Moore	Committee Member
Robert Calkhoven	Committee Member
Elizabeth Clark	Committee Member
Greg See	Committee Member
Bridget Crouch	Committee Member

Natalie Harker	Manager
----------------	---------

### Sculpture in the Valley Committee

David Ball	Curator
Stuart McCreery	Director
Kathy Harrington	Commercial Manager
Julie Ward	Production
Stephen Wilson	Infrastructure
Howard Sacre	Communications
Lisa Anthony	Communications
Kerri Carlton	Catering
Ken Novich	Traffic and Logistics
Elizabeth Clark	Volunteer coordination
Nick Minogue	Authorities



Sculpture in the Valley is supported by the NSW Government through Create NSW

## our volunteers

Without the volunteers, this exhibition would not exist. Our team encompasses volunteers on site during the exhibition and many others who have been working in the planning for months beforehand. All have given hundreds of hours and shared their expertise to ensure that Sculpture in the Valley 2023 is a success.

To the many volunteers who have given generously of their time to attend the entry gate, information table, direct parking, supervise indoor and outdoor sculpture galleries, unpack and pack sculptures, put up signs and marquees and install generators, we thank you.

**We'll make the earth move under your feet**

or ...  
on the drive way; at the house site  
in the subdivision; on the property;  
in the dam ...

In fact, **Selbys** can, and do, make the earth move just about anywhere!

**For more info visit [www.selbys.net.au](http://www.selbys.net.au)**

**SERVICING THE LOCAL COMMUNITY FOR OVER 25 YEARS**



arts in the valley presents  
in association with Musica Viva Australia

# AUSTRALIAN VOCAL ENSEMBLE (AVÉ)

SATURDAY 7TH OCTOBER 5PM



KATIE NOONAN  
FIONA CAMPBELL  
ANDREW GOODWIN  
ANDREW O'CONNOR

DHARAWAL COUNTRY

**KANGAROO VALLEY HALL**

DOORS 4.30PM | TICKETS \$80

[artsinthevalley.net.au](http://artsinthevalley.net.au)